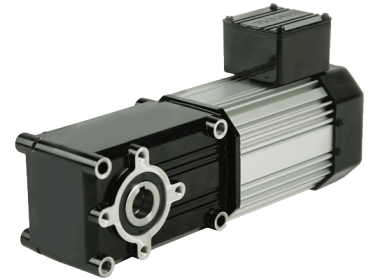


Maximum Efficiency Right-angle Gearmotors 720 230V Three-Phase Inverter Duty

PowerSTAR® 720 Series 230V three-phase right-angle inverter duty gearmotor offers up to 470 in-lbs of torque running continuously in a sleek, compact profile.



720 Series 3PH 230V Inverter Duty -TEFC*

Part Number	Speed (RPM)			Rated Torque (in-lbs)			Input HP	Gear Ratio	OHL (lbs)	Rated Current 230V (Amps)		
	6Hz	60Hz	90Hz	6Hz	60Hz	90Hz				6Hz	60Hz	90Hz
027-720G0010	17	168	252	35	35	23	1/8	10	270	0.64	0.63	0.53
027-720G0015	11	112	168	55	55	37	1/8	15	305	0.64	0.63	0.53
027-720G0020	8.4	84	126	73	73	49	1/8	20	330	0.64	0.63	0.53
027-720G0030	5.6	56	84	105	105	70	1/8	30	370	0.64	0.63	0.53
027-720G0040	4.2	42	63	145	145	97	1/8	40	400	0.64	0.63	0.53
027-720G0050	3.4	34	50	180	180	120	1/8	50	430	0.64	0.63	0.53
027-720G0060	2.8	28	42	220	220	147	1/8	60	455	0.64	0.63	0.53
027-720G0080	2.1	21	31	295	295	197	1/8	80	490	0.64	0.63	0.53
027-720G0100	1.7	17	25	365	365	243	1/8	100	525	0.64	0.63	0.53
027-720G0120	1.4	14	21	440	440	293	1/8	120	550	0.64	0.63	0.53
027-720G0150	1.1	11	17	295	295	197	1/15	150	635	0.43	0.39	0.33
027-720G0180	0.9	9.3	14	355	355	237	1/15	180	670	0.43	0.39	0.33
027-720G0240	0.7	7.0	10	470	470	313	1/15	240	725	0.43	0.39	0.33

See accessories on page 17

